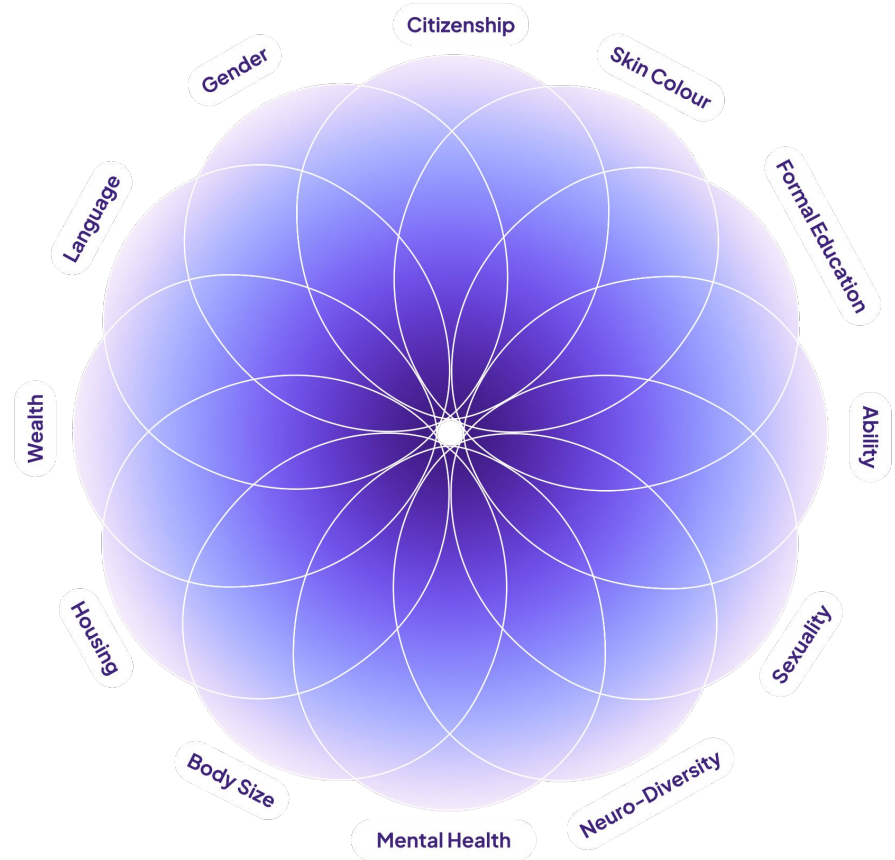


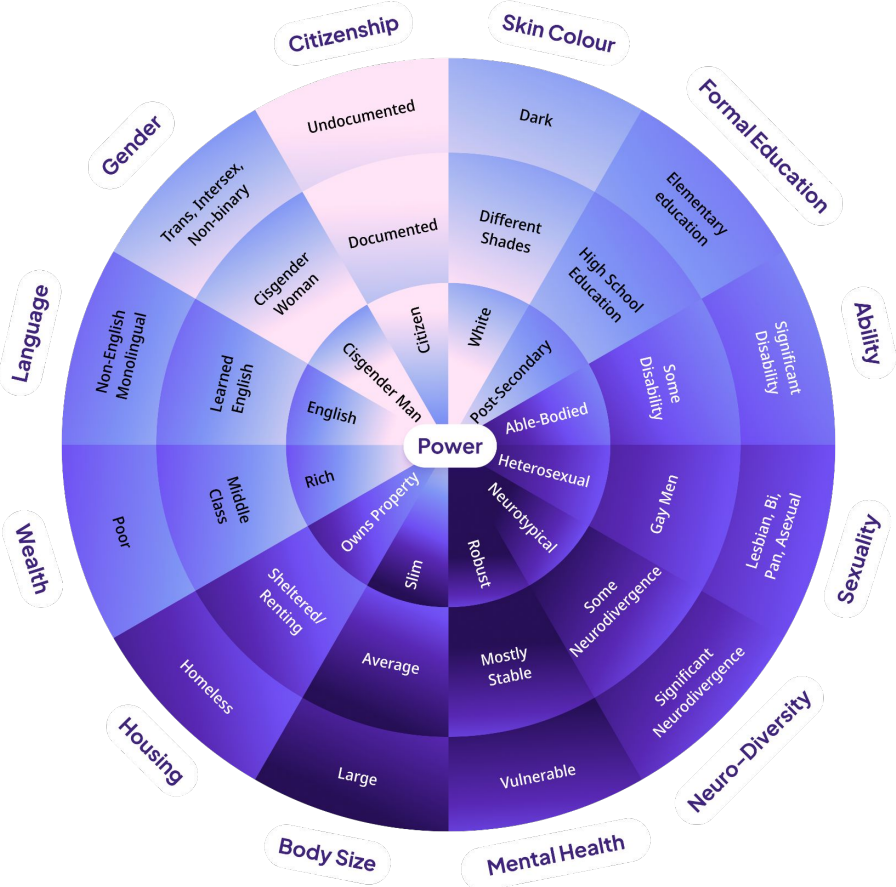
# Intersectionality

Intersectionality explains how different aspects of a person's identity (like race, gender, and wealth class) combine to shape their unique experiences and challenges. This graph might show some of these identities, but it can't capture them all—there are many more not listed here.



# Intersectionality

This diagram illustrates how various aspects of identity, such as gender, race, class, and more, intersect to affect an individual's power and privilege, showing that not all identities are represented.



# Contact us



**Book a Consultation**

[diversio.com/demo](https://diversio.com/demo)

Looking to learn more about our training program? We'd love to hear from you! Whether you have questions about our curriculum, the learning process, or anything else, our team is here to help. Reach out to us today and we'll be happy to answer your questions and help you take the next step in your learning journey.

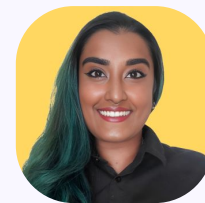
 @diversioglobal



**Matteo Stewart**

Senior Inclusive  
Leadership Facilitator

 [matteo@diversio.com](mailto:matteo@diversio.com)



**Sheena Prasad**

Lead  
Consultant

 [sheena@diversio.com](mailto:sheena@diversio.com)